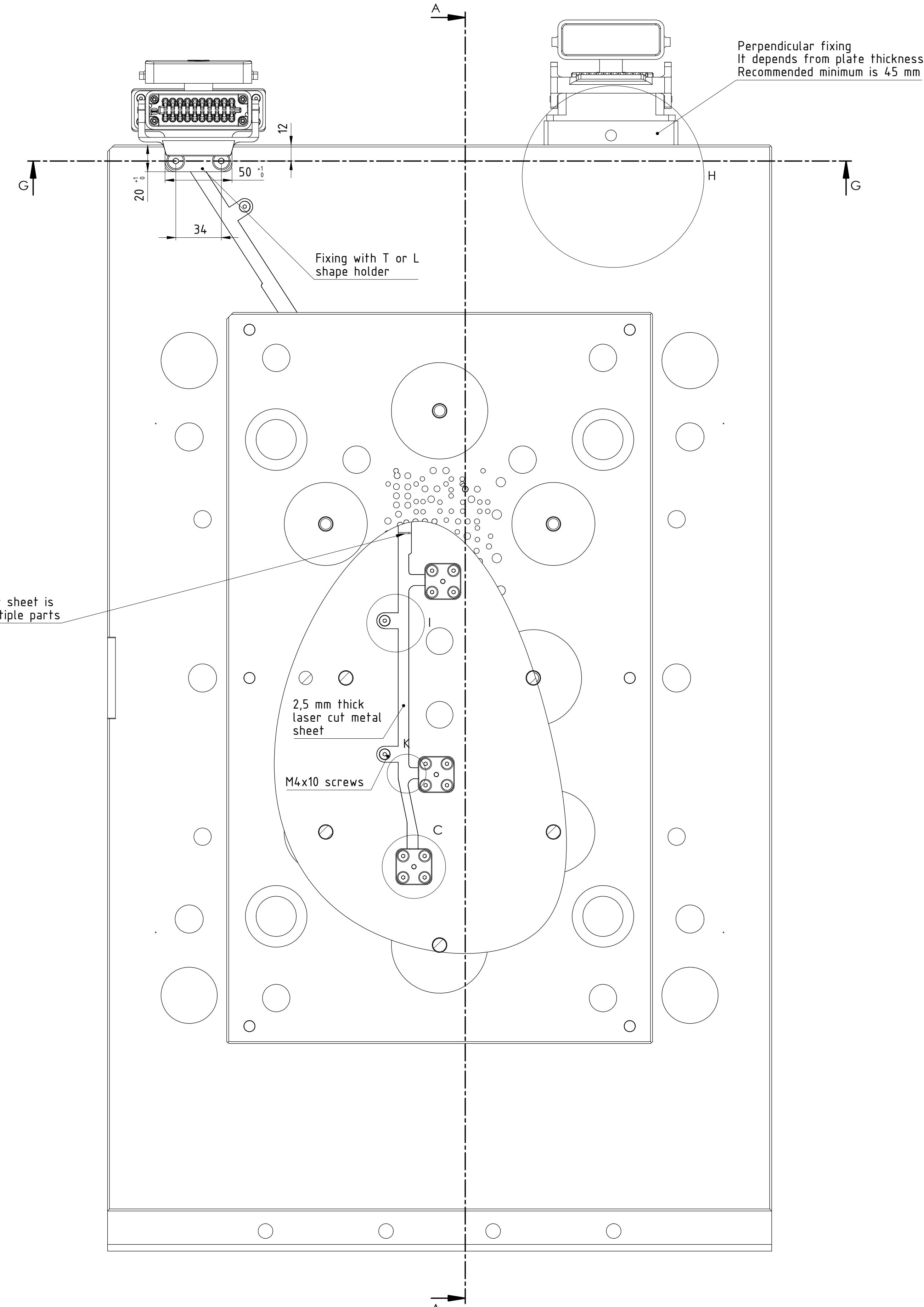


SECTION G-G



Perpendicular fixing
It depends from plate thickness
Recommended minimum is 45 mm

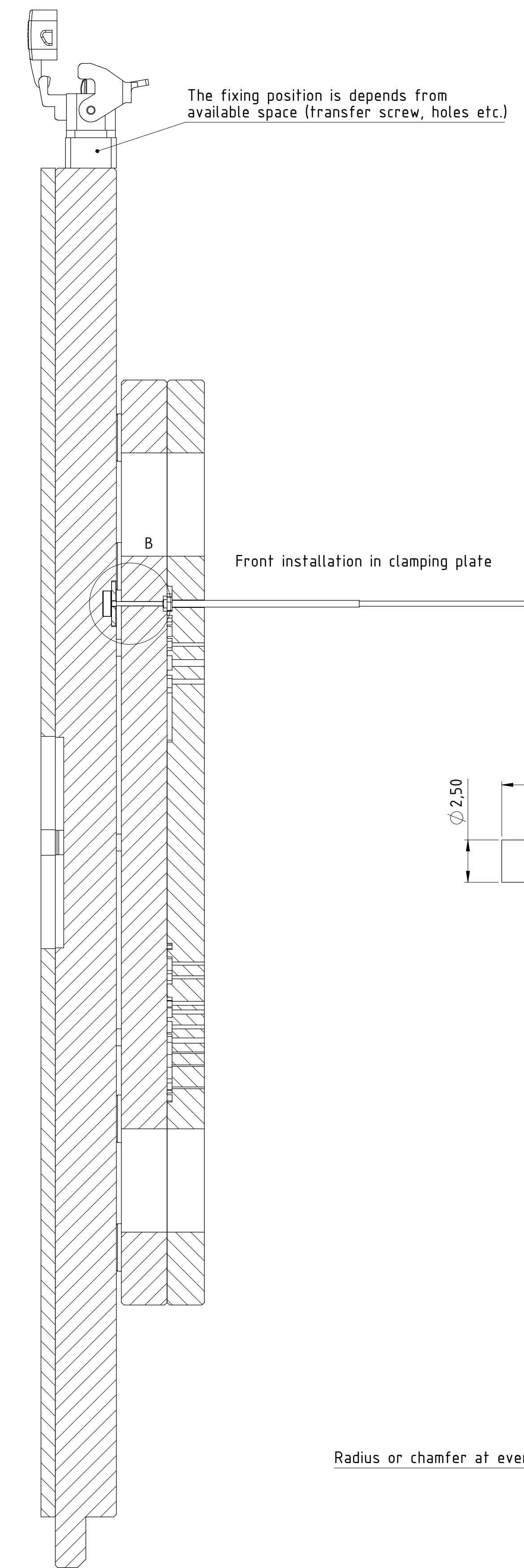
Fixing with T or L
shape holder

2.5 mm thick
laser cut metal
sheet

M4x10 screws

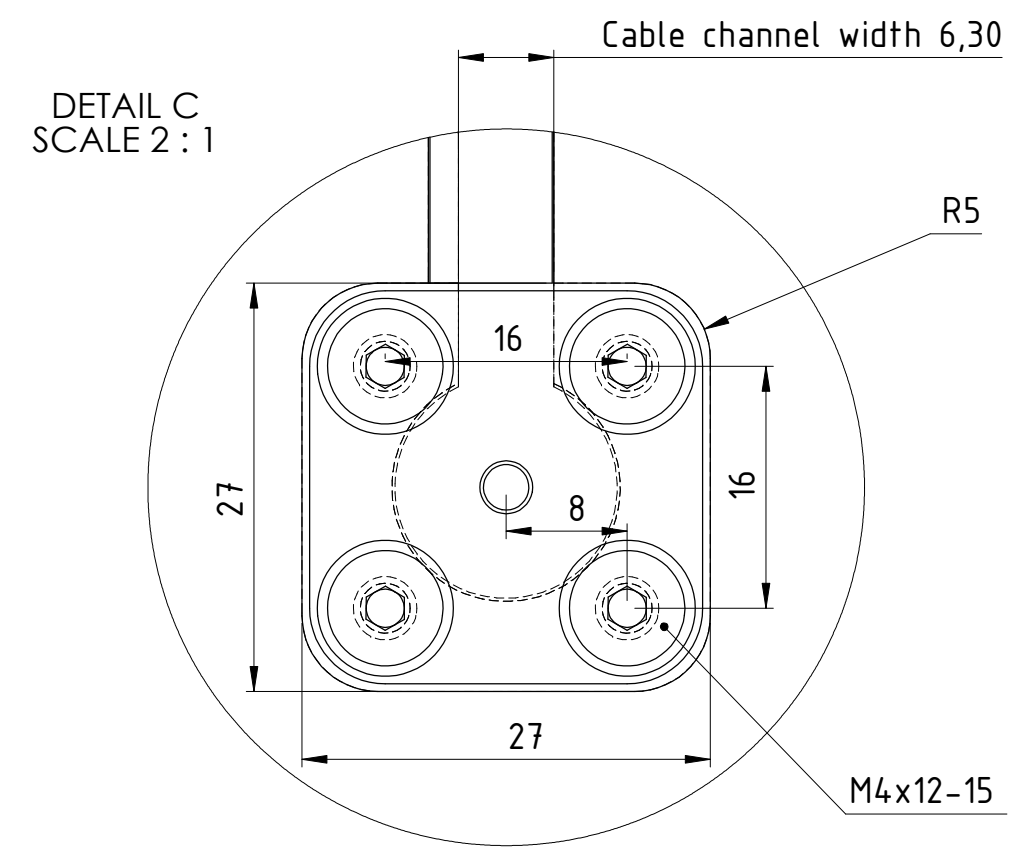
Usually the cover sheet is
separated to multiple parts

SECTION A-A



The fixing position is depends from
available space (transfer screw, holes etc.)

Front installation in clamping plate

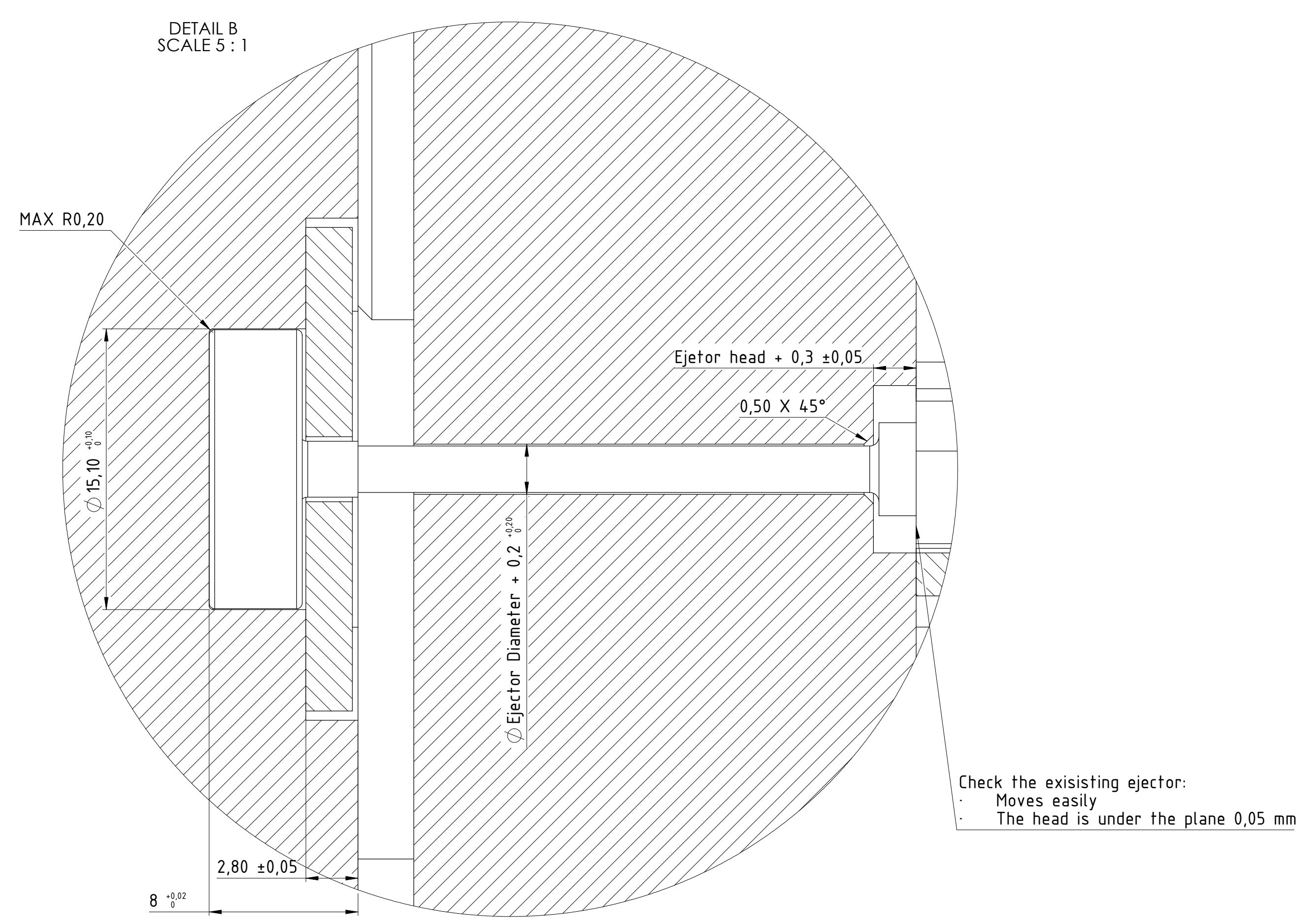


DETAIL C
SCALE 2:1

Cable channel width 6,30

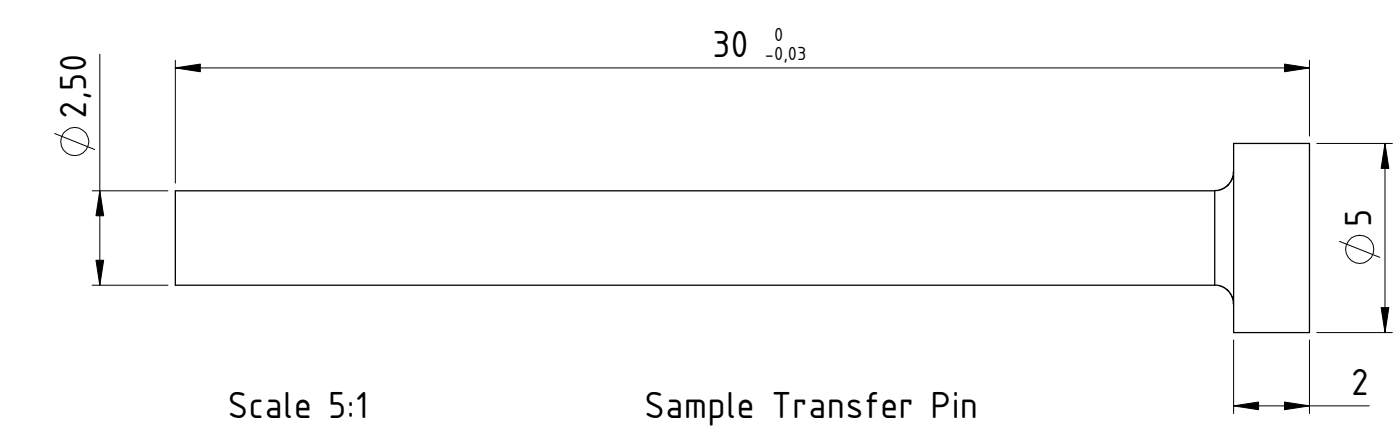
R5

M4x12-15



DETAIL B
SCALE 5:1

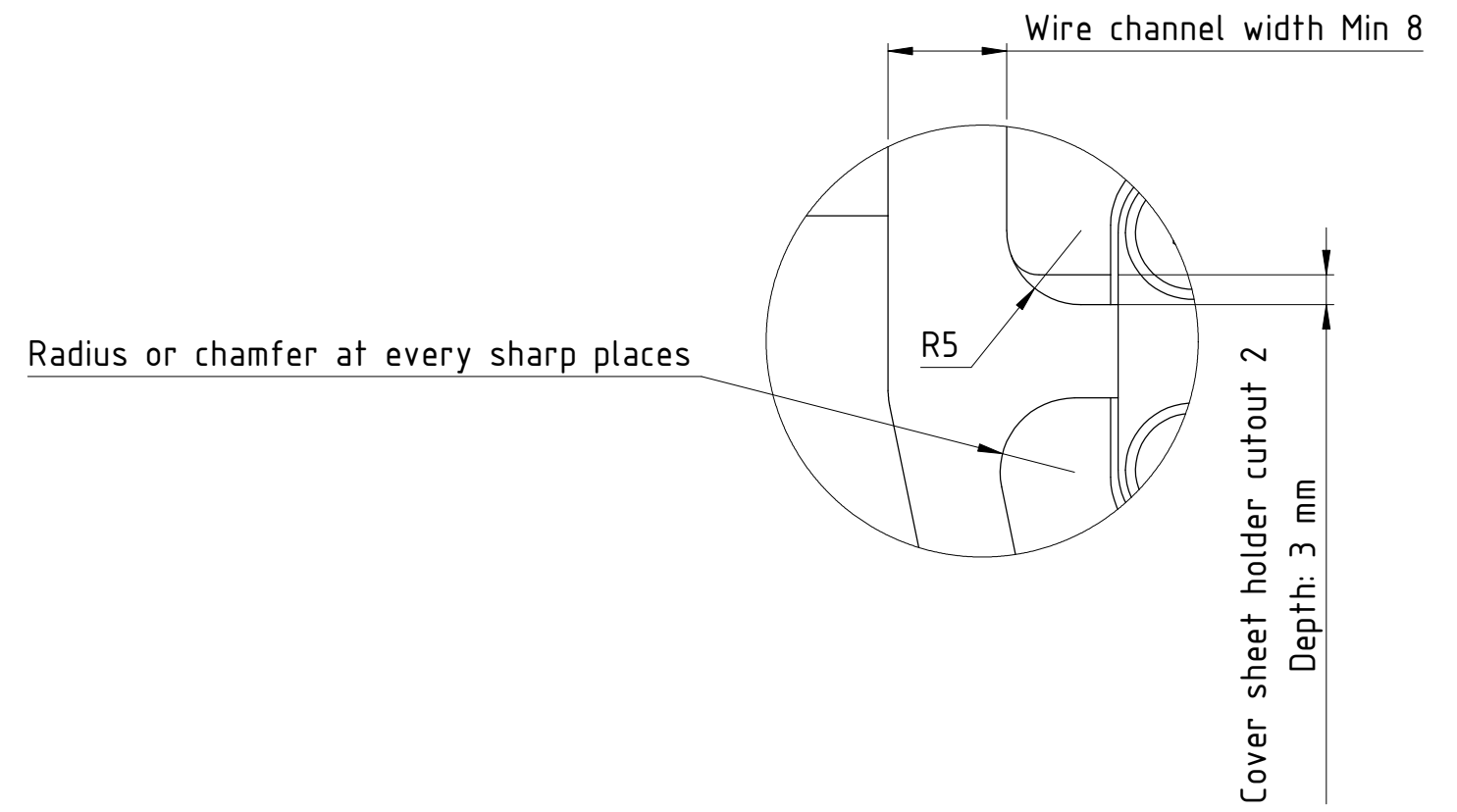
Check the existing ejector:
Moves easily
The head is under the plane 0,05 mm



Scale 5:1

Sample Transfer Pin

DETAIL K
SCALE 2:1



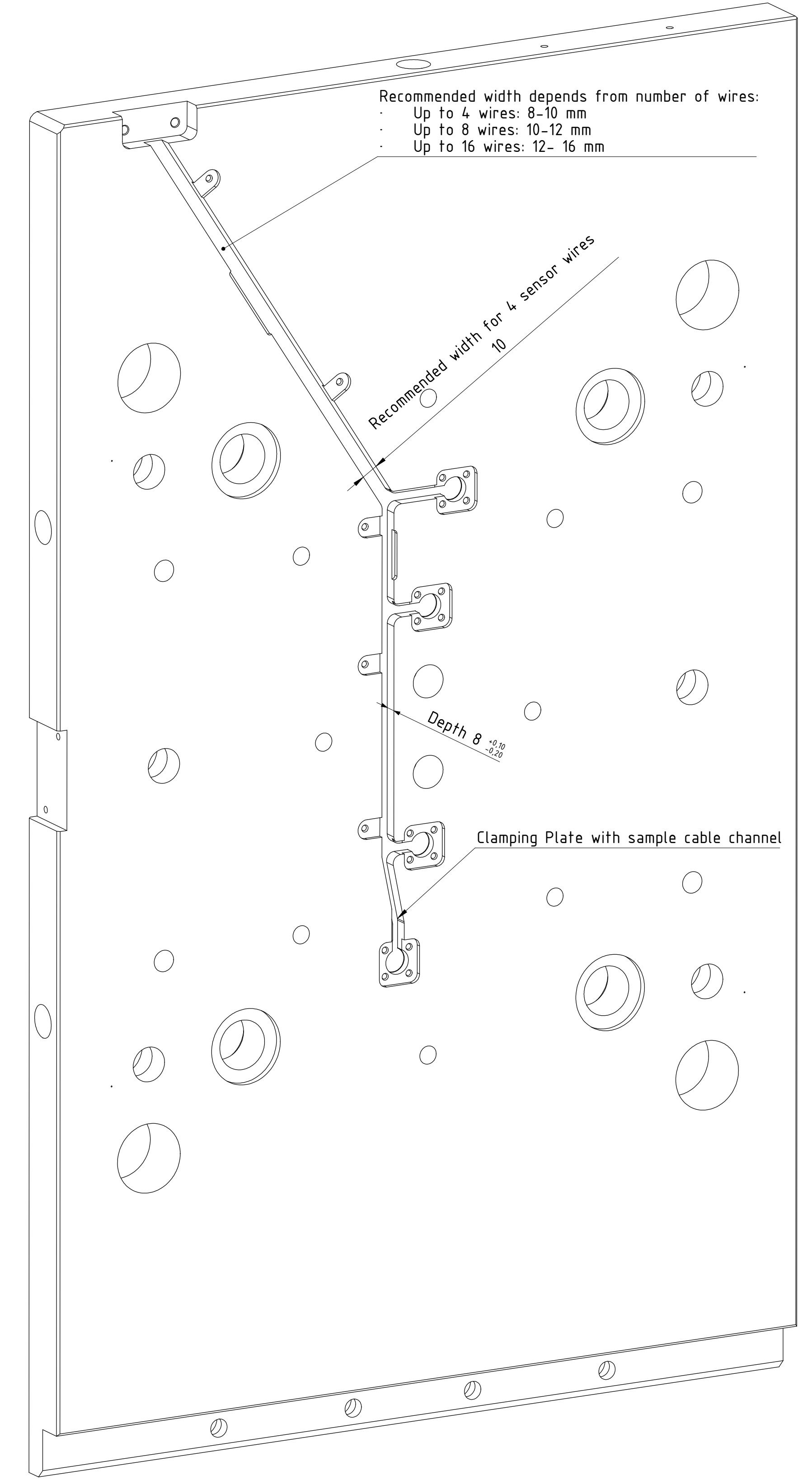
Radius or chamfer at every sharp places

Wire channel width Min 8

R5

Cover sheet holder cutout 2

Depth: 3 mm

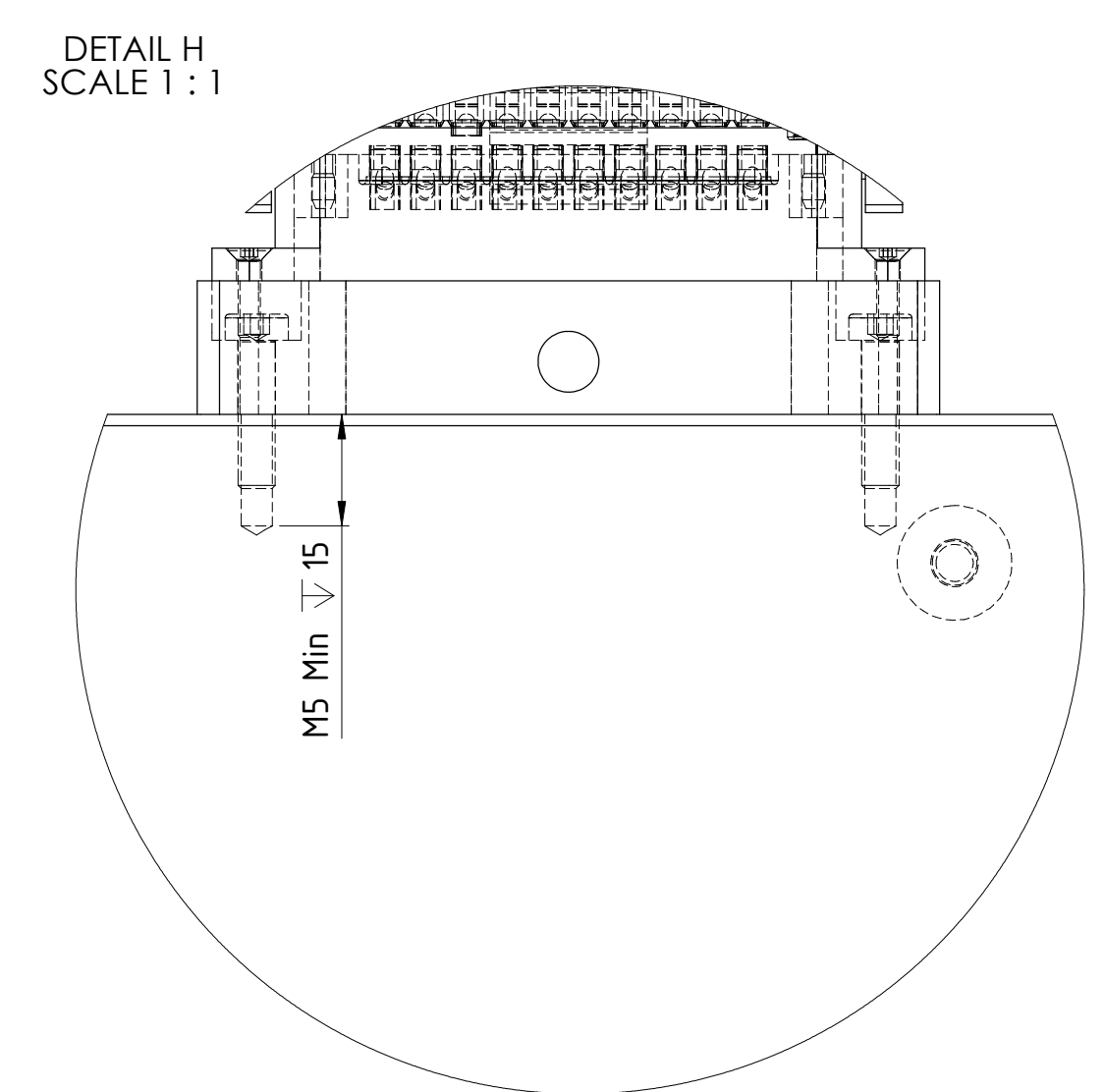


Recommended width depends from number of wires:
Up to 4 wires: 8-10 mm
Up to 8 wires: 10-12 mm
Up to 16 wires: 12-16 mm

Recommended width for 4 sensor wires

Depth 8 ±0,2

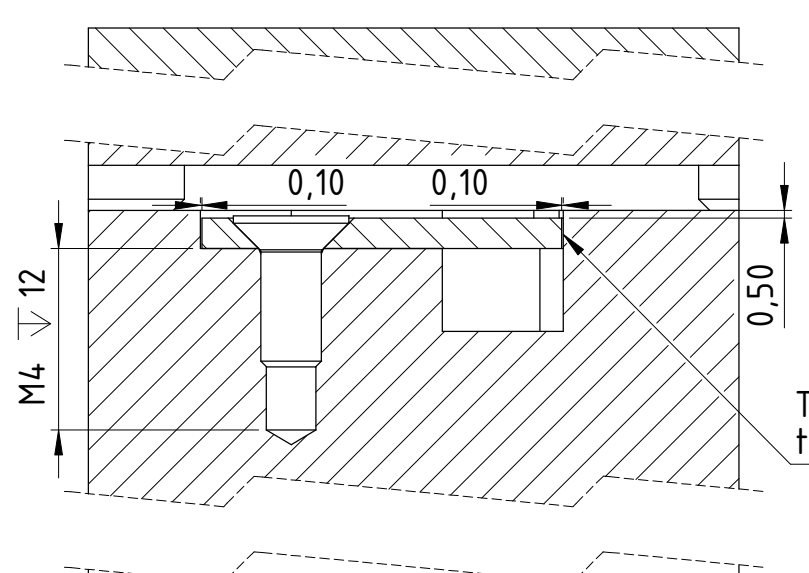
Clamping Plate with sample cable channel



DETAIL H
SCALE 1:1

15 Min

SECTION J-J
SCALE 2:1



The cover sheet is 0,1 mm smaller
then wire channel at every side

DETAIL I
SCALE 2:1

