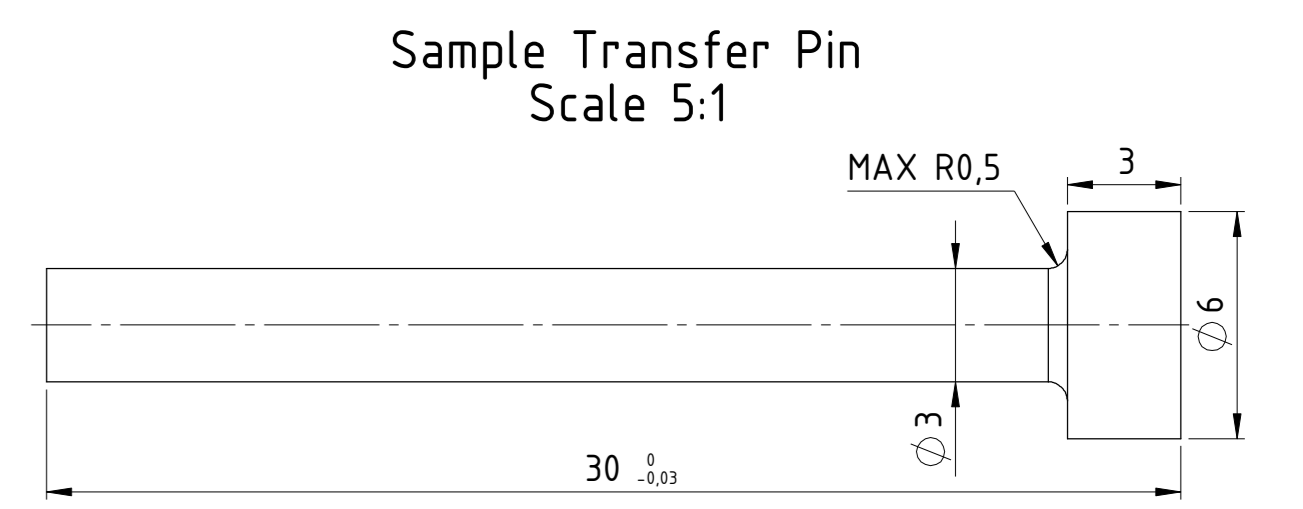
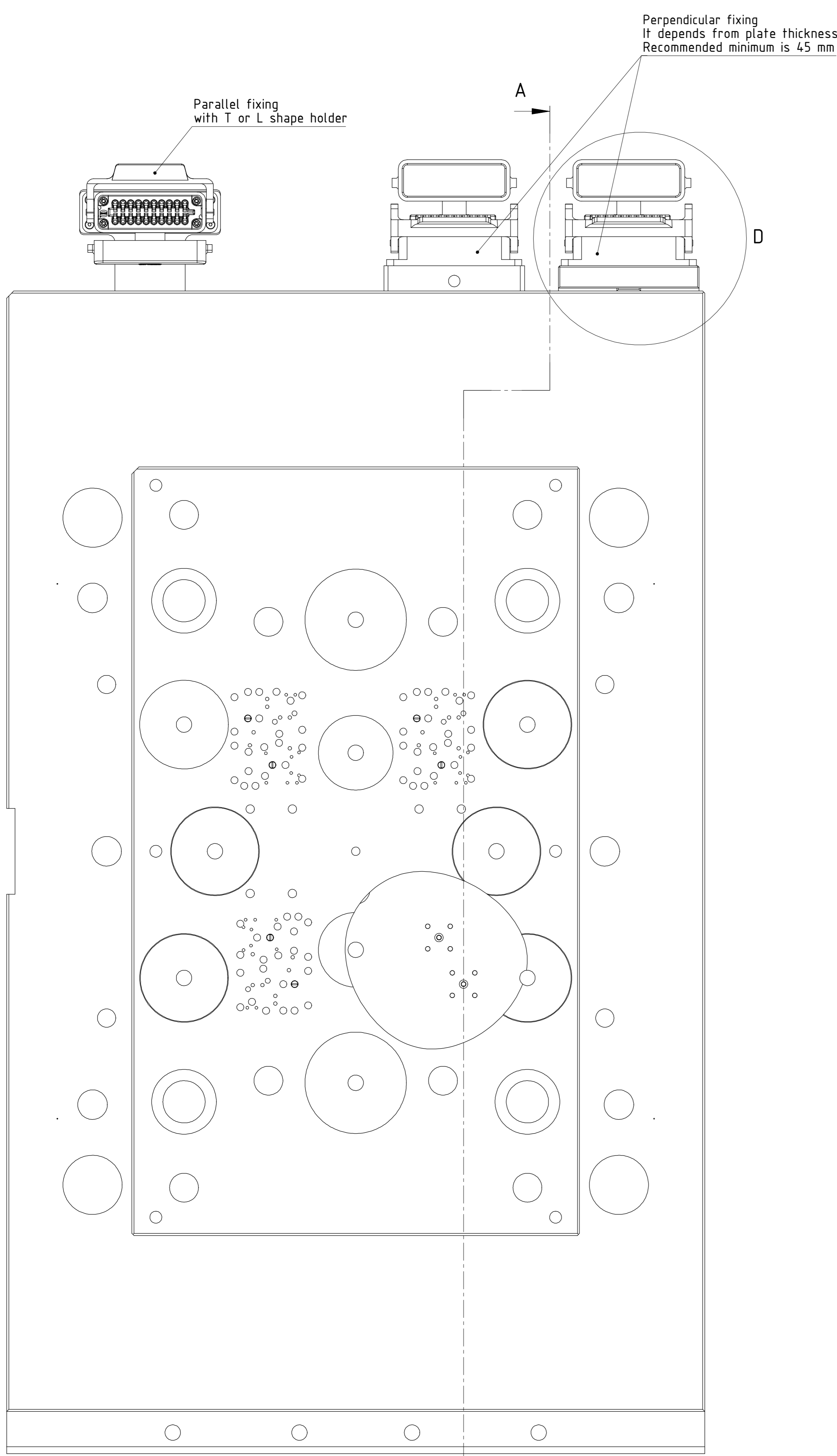
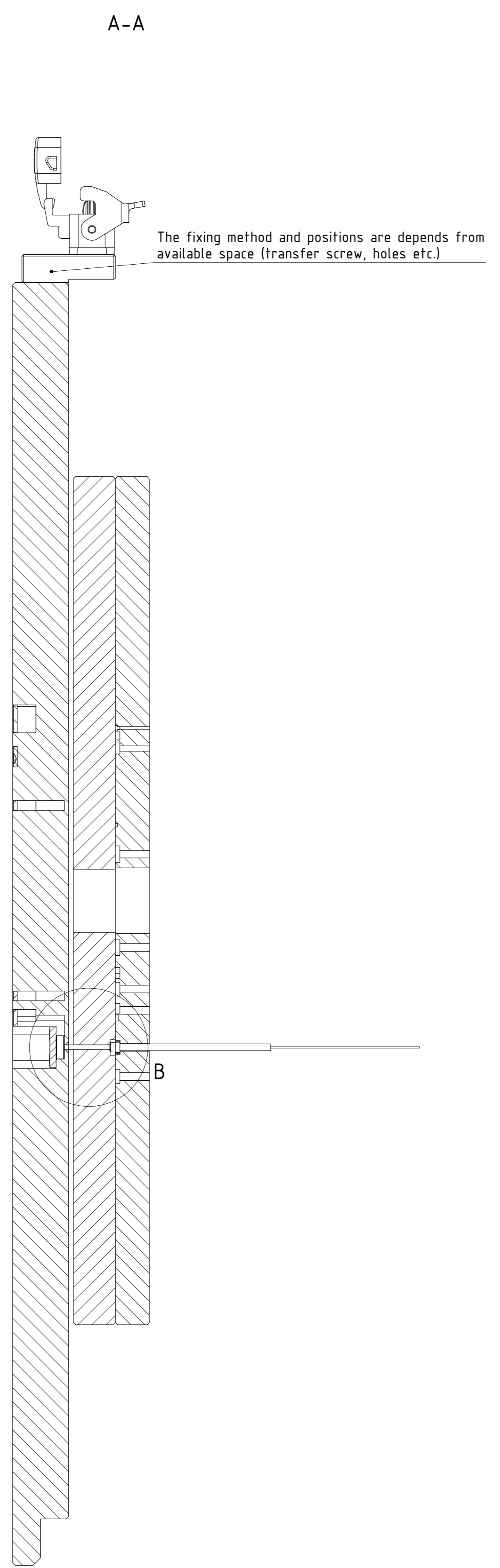
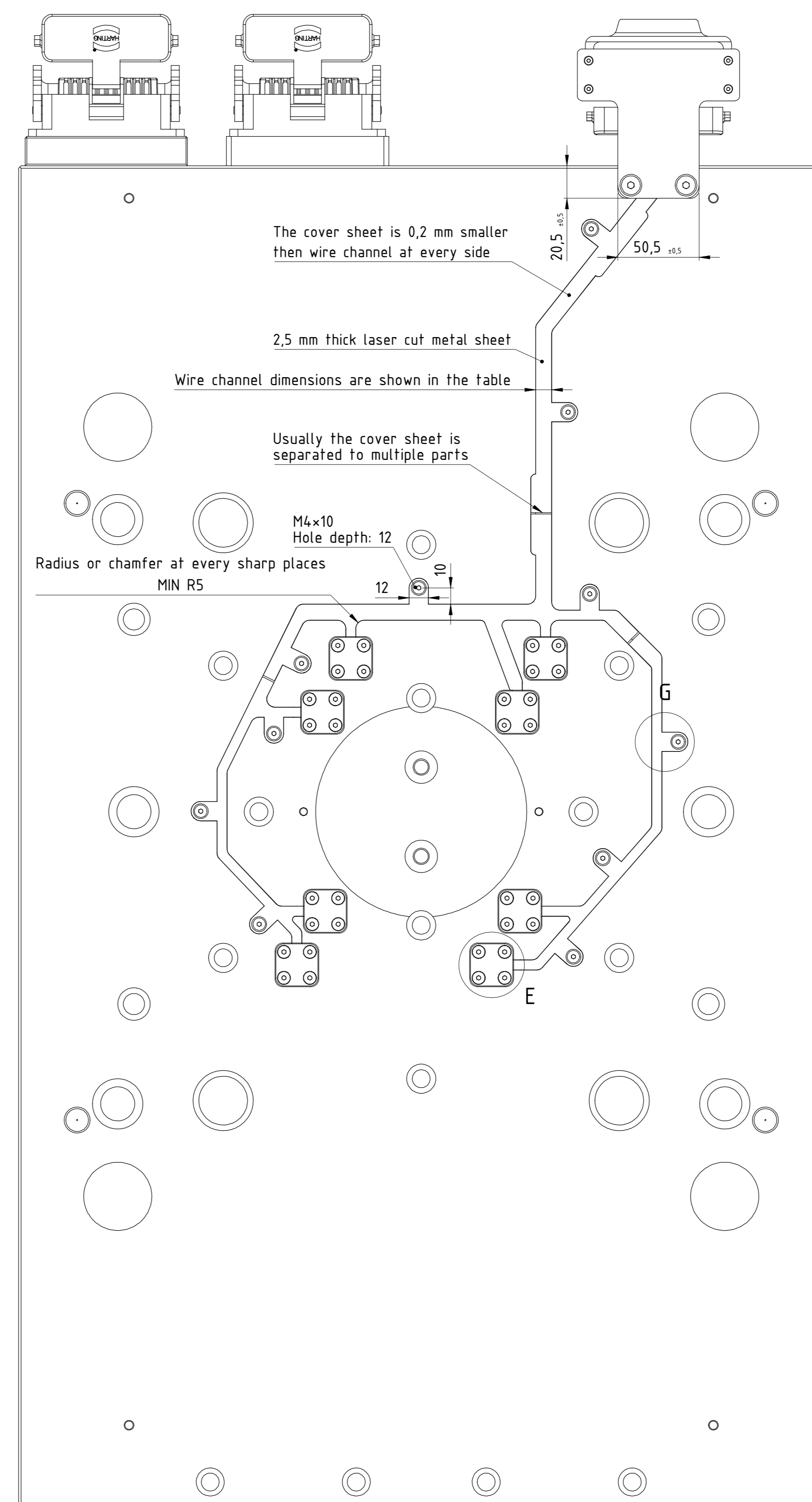
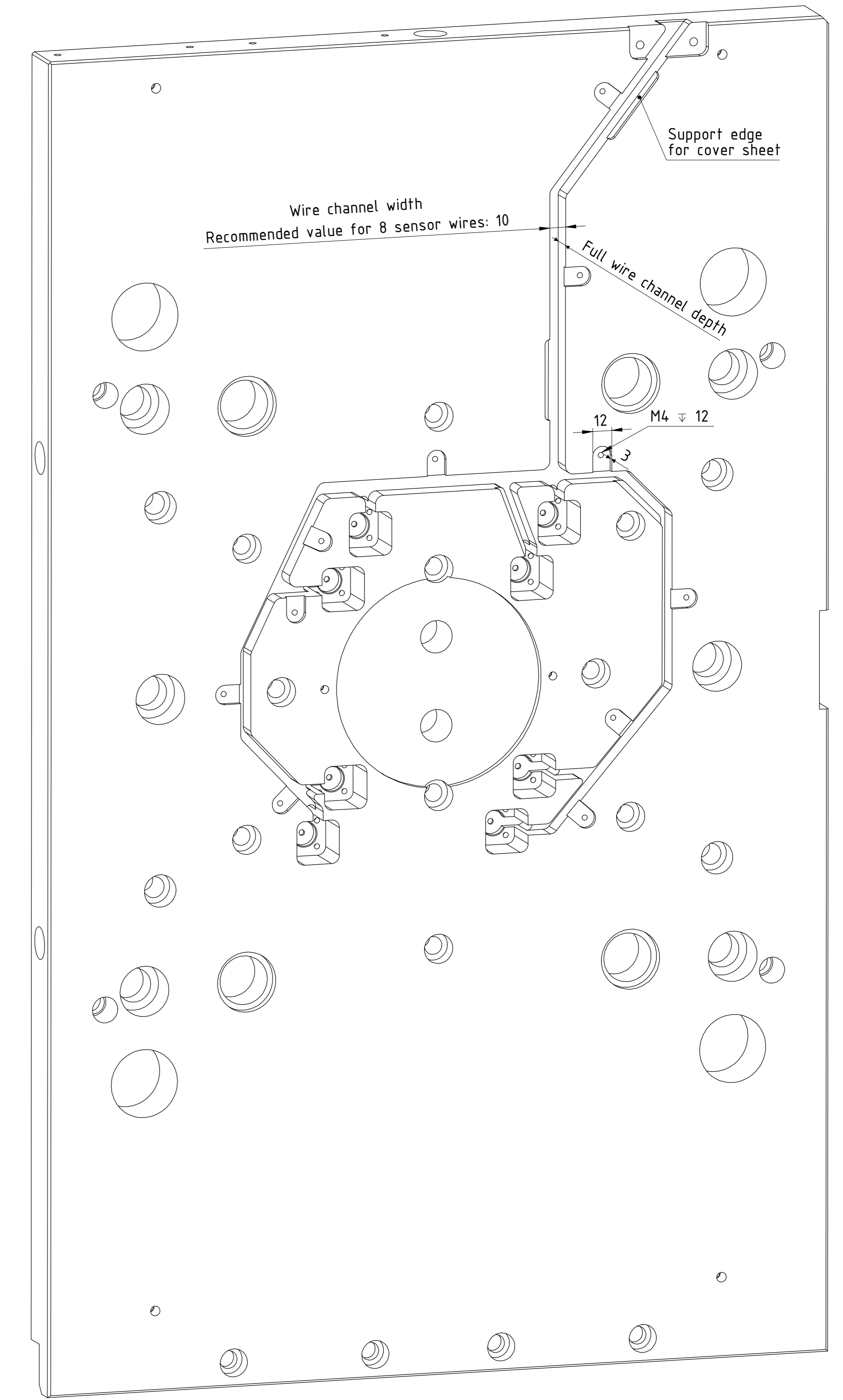


Clamping Plate with sample cable channel



Wire channel dimensions				
Amount of sensor wires	Minimum depth	Recommended depth	Minimum width	Recommended width
1-4	5	6	6,3	8
5-8	5	6	10	12
9-12	5	6	12	14
13-16	6	8	12	14
17-32	8	10	16	18

ITEM NO.	NAME	QTY.
1	Ejector retaining plate	1
2	Ejector pin	8
3	Transfer pin	8
4	Ejector base plate	1
5	Clamping plate	1
6	Pressure sensor	8
7	Back cover plate	8
8	Hex. socket countersunk head screw (DIN 7991-M4x10)	43
9	Wire channel cover sheet	1
10	Mould socket with T-shape holder	1
11	Mould socket with standard spacer	1
12	Mould socket with offset spacer	1
13	Low Head Socket Cap Screw (DIN 7984-M5x20)	4
14	T-shape holder	1
15	Low Head Socket Cap Screw (DIN 7984-M3x12)	4
16	Hex. socket countersunk head screw (DIN 7991-M6x12)	2

