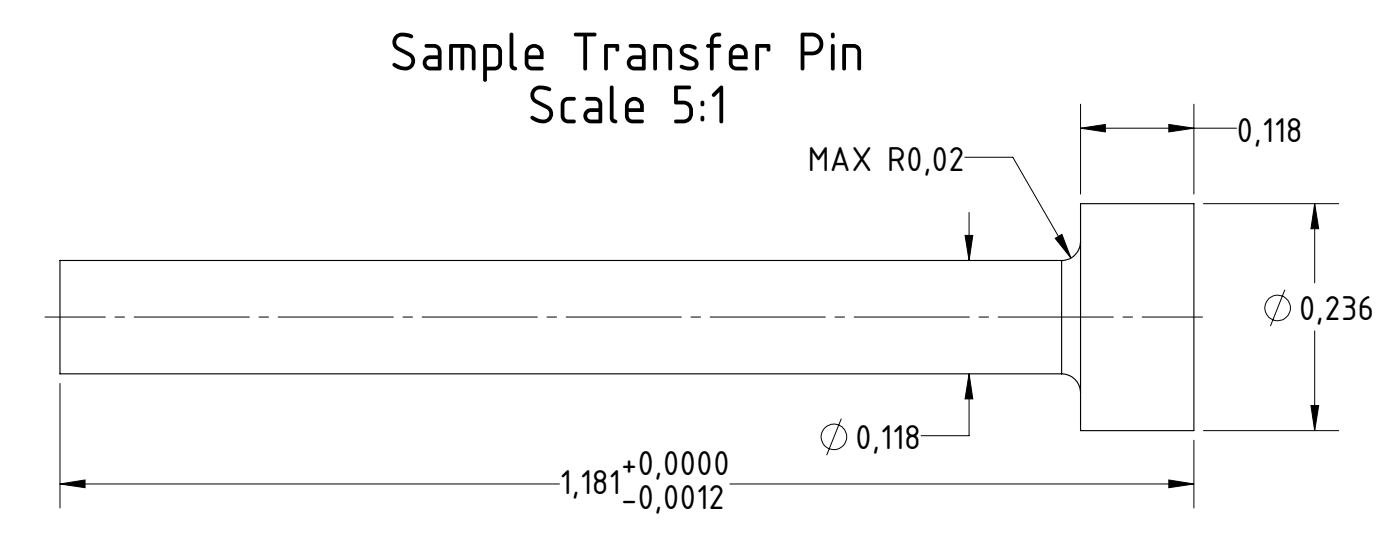
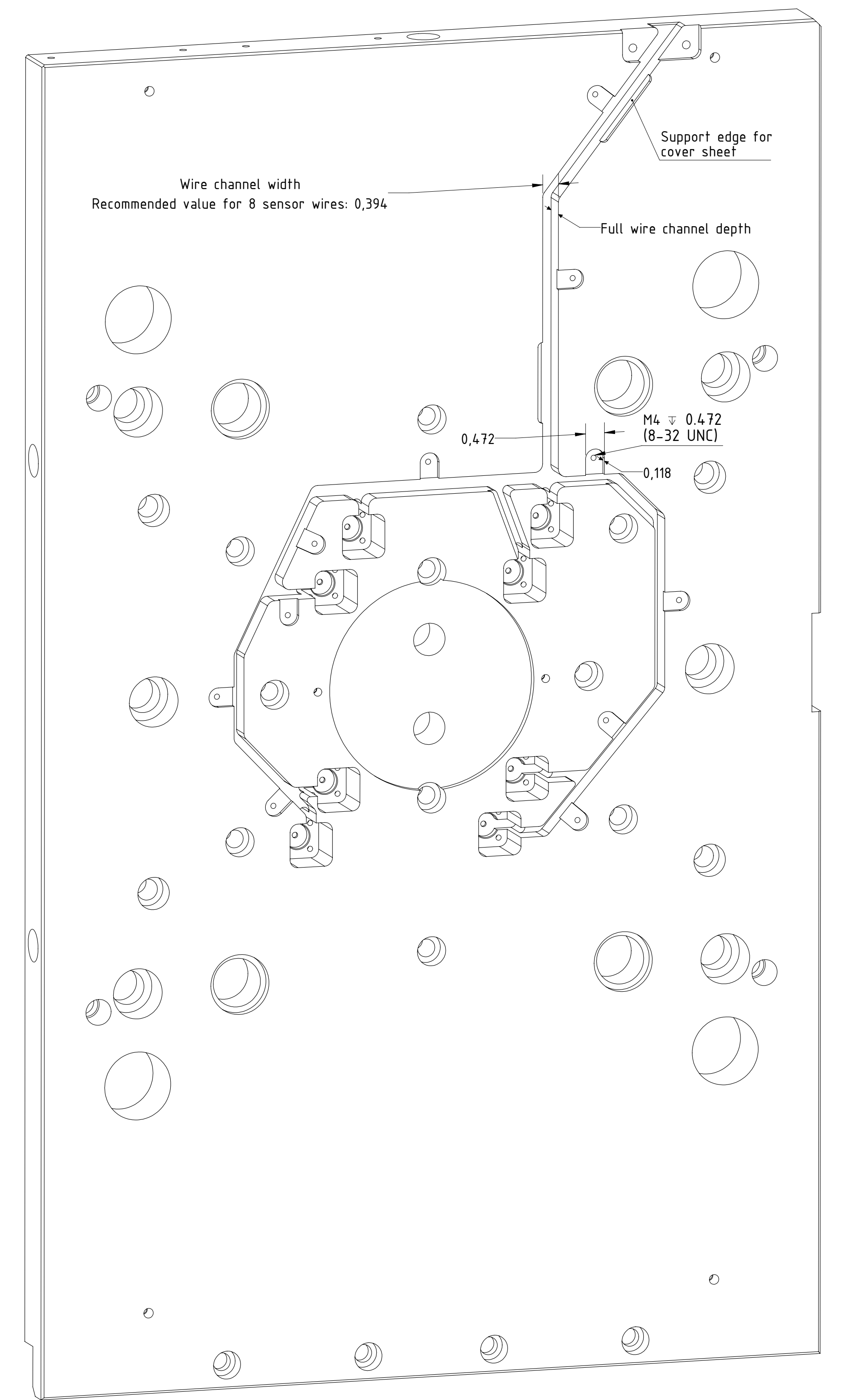
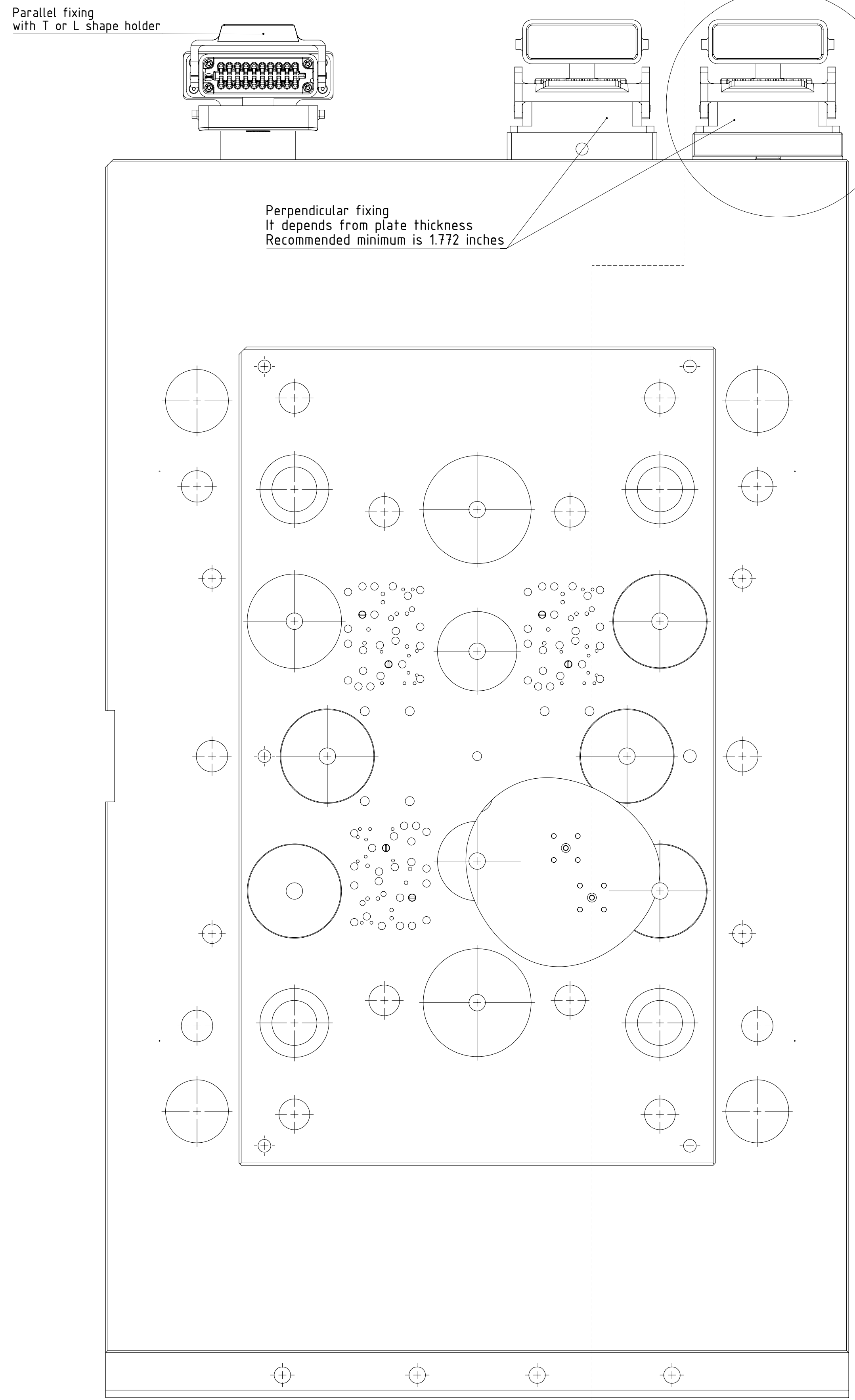
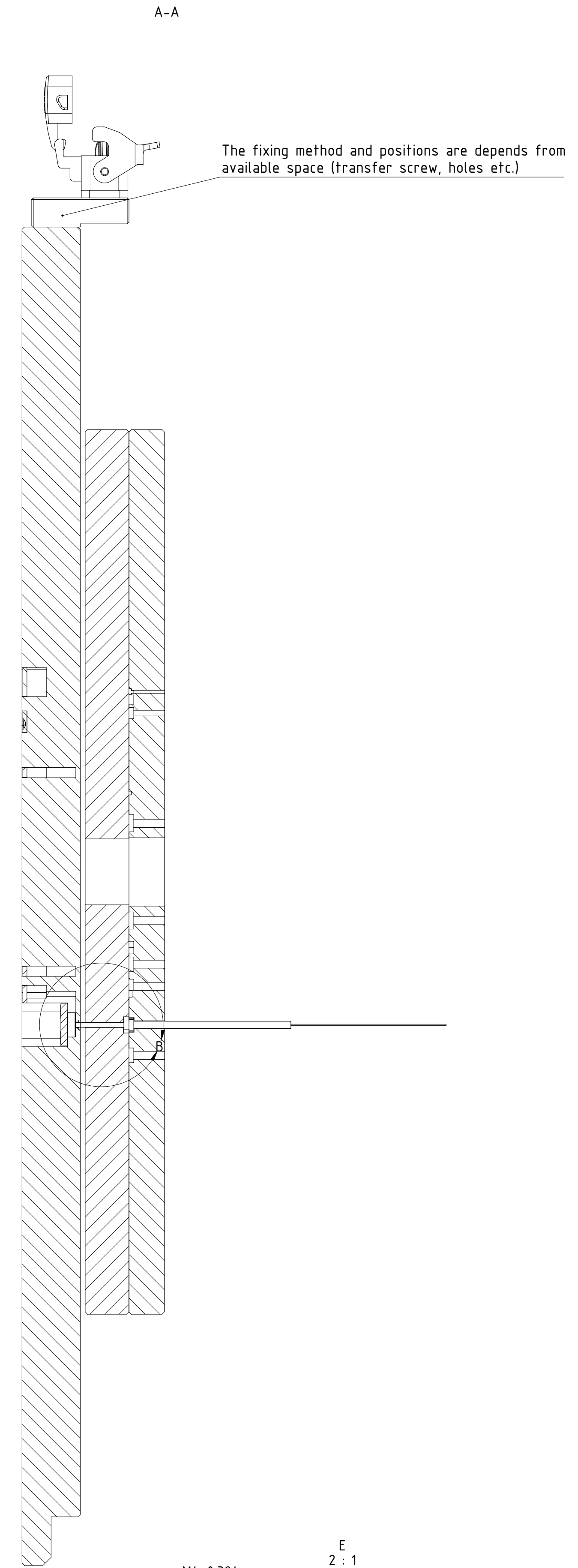
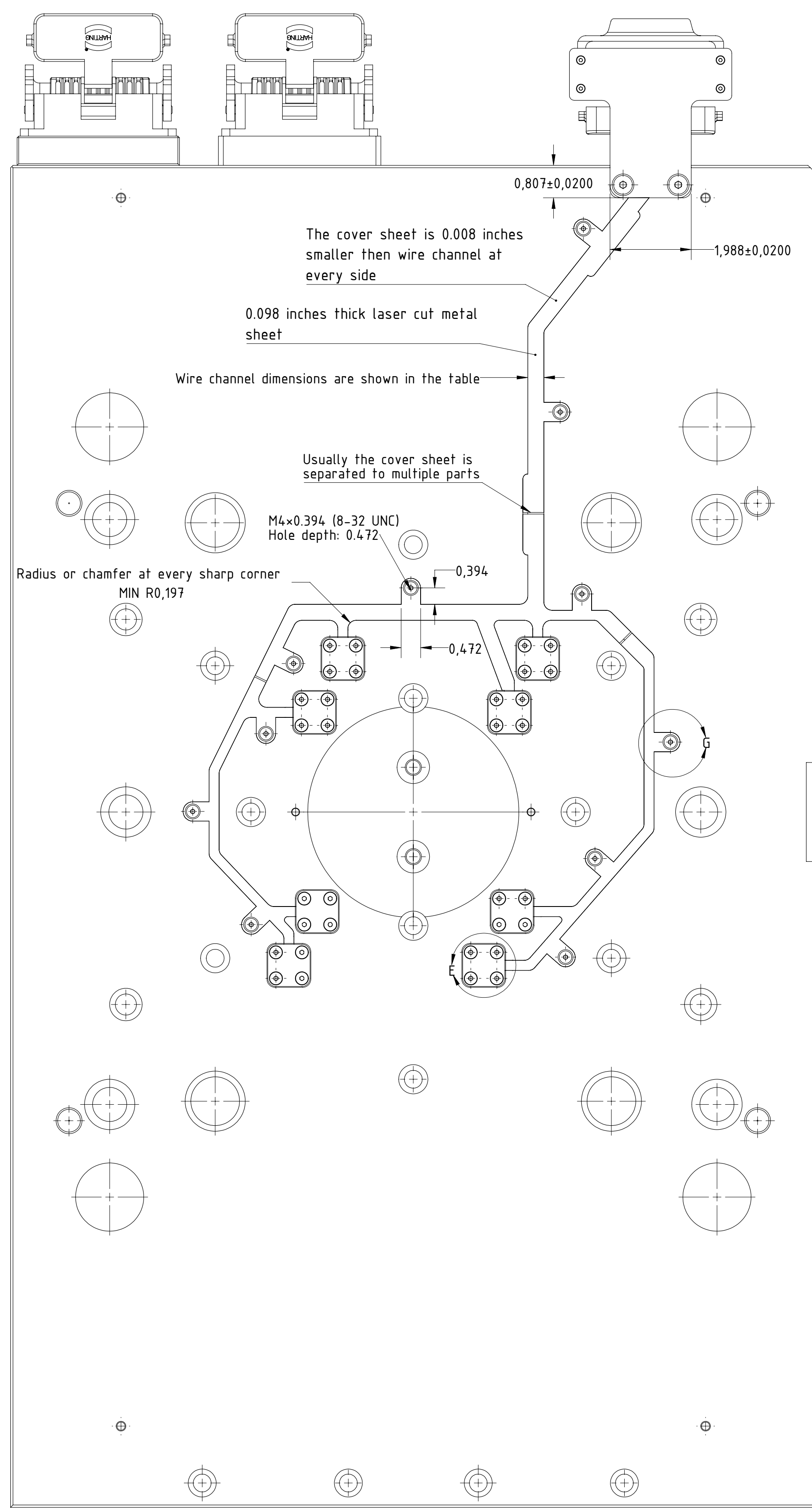
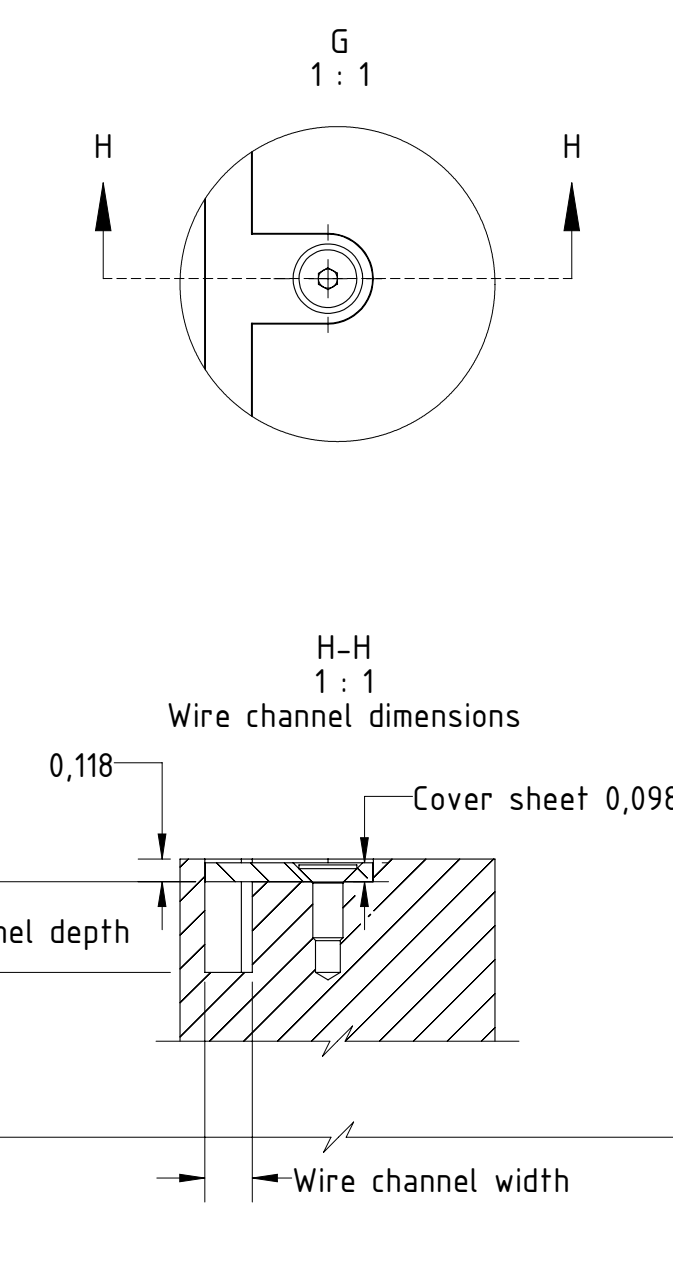
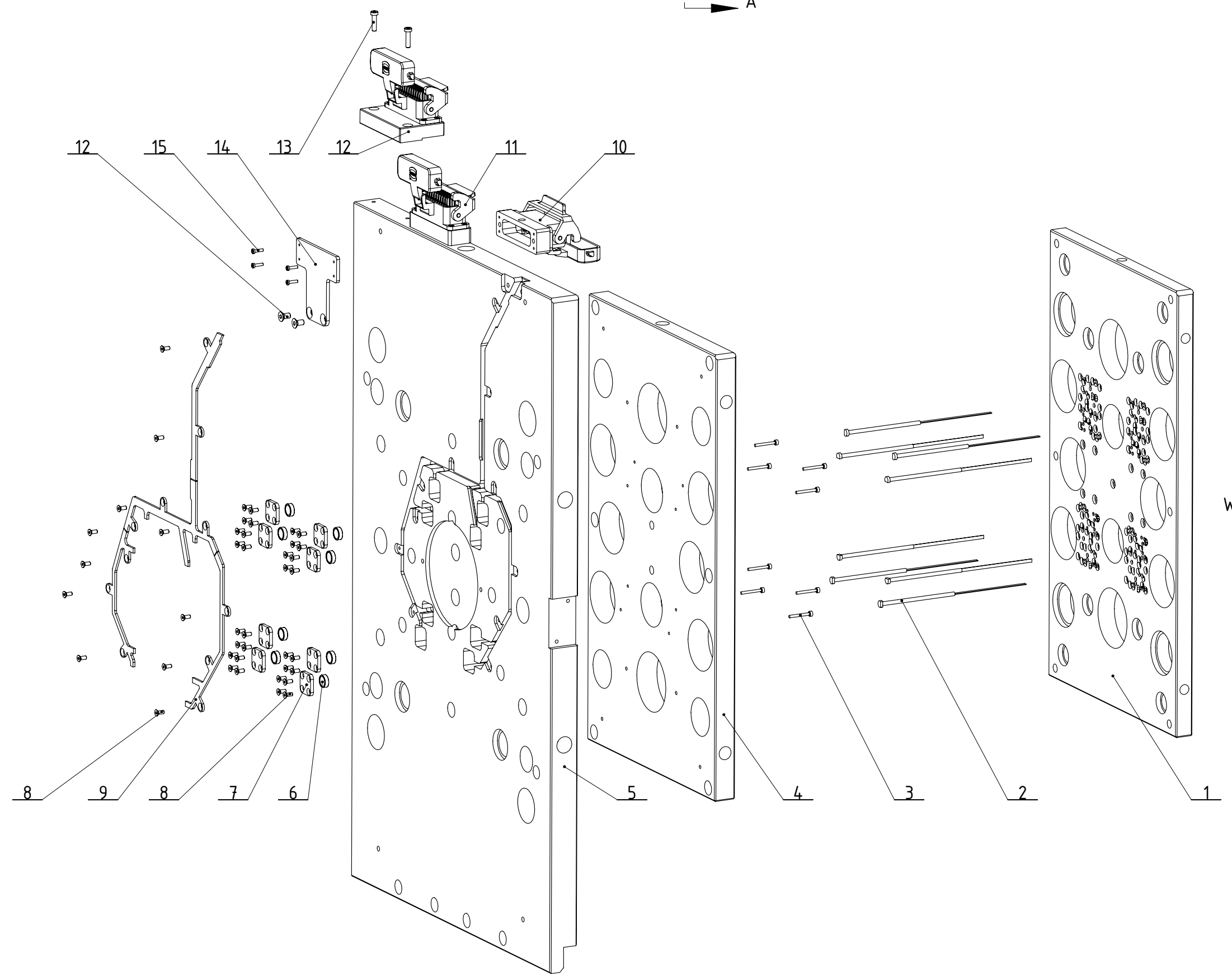
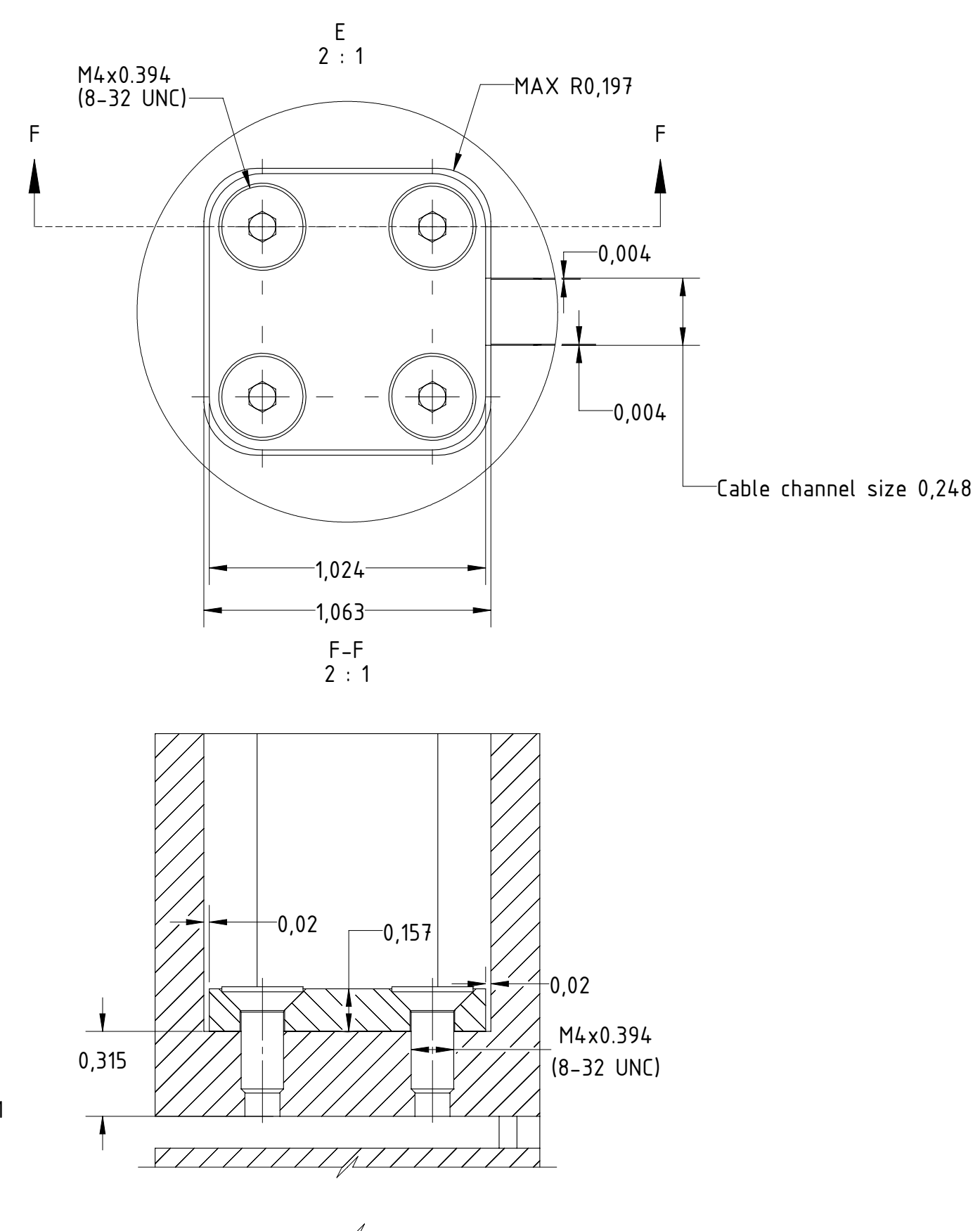


Clamping Plate with sample cable channel



Wire channel dimensions				
Amount of sensor wires	Minimum depth	Recommended depth	Minimum width	Recommended width
1-4	0.197	0.236	0.248	0.315
5-8	0.197	0.236	0.394	0.472
9-12	0.197	0.236	0.472	0.551
13-16	0.236	0.315	0.472	0.551
17-32	0.315	0.394	0.630	0.709



ITEM NO.	NAME	QTY.
1	Ejector retaining plate	1
2	Ejector pin	8
3	Transfer pin	8
4	Ejector base plate	1
5	Clamping plate	1
6	Pressure sensor	8
7	Back cover plate	8
8	Hex. socket countersunk head screw (DIN 7991-M4x10)	43
9	Wire channel cover sheet	1
10	Mould socket with T-shape holder	1
11	Mould socket with standard spacer	1
12	Mould socket with offset spacer	1
13	Low Head Socket Cap Screw (DIN 7984-M5x20)	4
14	T-shape holder	1
15	Low Head Socket Cap Screw (DIN 7984-M3x12)	4
16	Hex. socket countersunk head screw (DIN 7991-M6x12)	2

All screw sizes are given in Metric standard and added UNC standard in parenthesis

